



OFFICE/RETAIL SPACE FOR LEASE

133 E. ANAPAMU ST.
SANTA BARBARA, CA

PROPERTY OVERVIEW

Downtown retail space located across the street from the County Courthouse and two blocks from State Street. Situated adjacent to the former Victor the Florist. The space has 10' ceilings and an ADA restroom and HVAC unit.

SIZE: +/- 1,280 SF

LEASE RATE: \$2.50/SF Gross

TERM: 3-5 Years

TENANT EXPENSES: Utilities

RESTROOM: 1 New ADA Restroom

HVAC: Yes

PARKING: Street Parking

ZONING: C-2

AVAILABLE DATE: February 1, 2025

Christi Vior
cvior@lee-associates.com
D 805.895.8765
CalDRE #803953



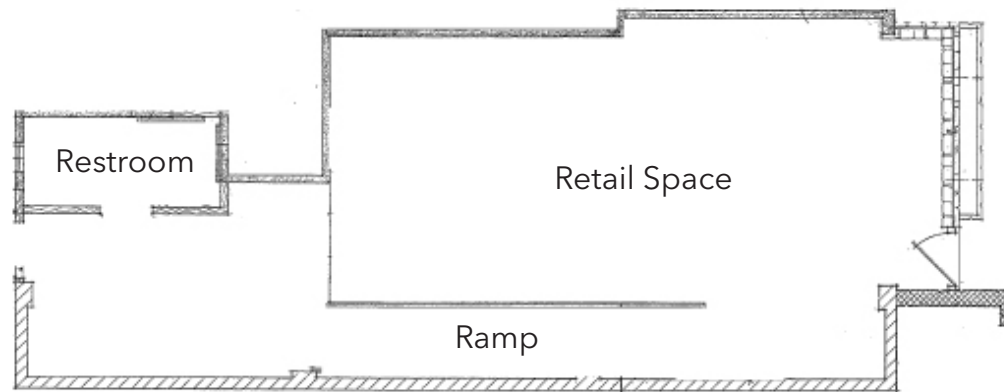
Jim Turner
jim@jtrealestategroup.com
D 805.724.0557
CalDRE #00970829



INTERIOR PHOTOS



FLOOR PLAN



E. ANAPAMU ST.

LOCATION DOWNTOWN SANTA BARBARA

